

Voltage and Current Sources

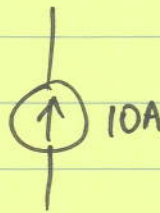
Two types : { independent sources
 { dependent sources.

(A) Independent Sources:

These are the ordinary voltage & current sources.



Independent Voltage Source
(makes 12 volts)

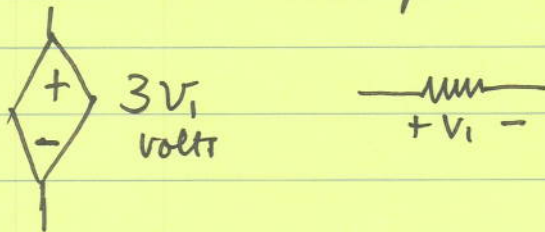


Independent Current Source
(makes 10 amps)

(B) Dependent Sources:

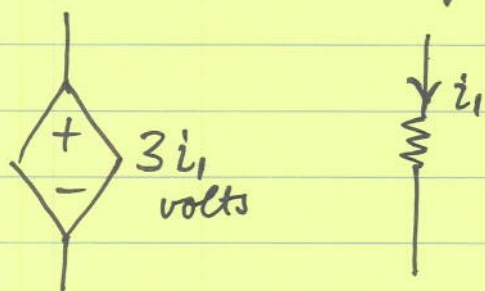
These are more complicated because they generate a voltage or current whose value depends upon a voltage or current somewhere else in the circuit.

Voltage - Controlled Voltage Source :



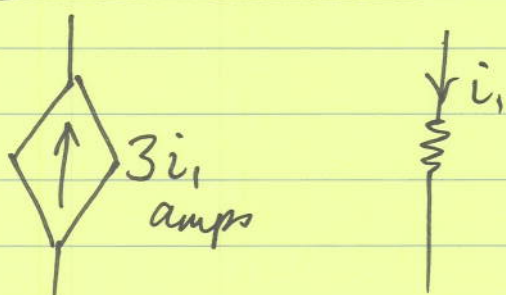
This source makes a voltage equal to $3V_1$, where V_1 is the voltage indicated.

Current - Controlled Voltage Source :



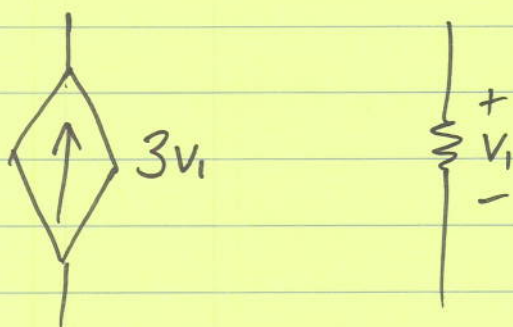
This source makes a voltage equal to $3i_1$ volts, where i_1 is the current indicated.

Current - Controlled Current Source :



This source makes a current equal to $3i_1$ amps, where i_1 is the current indicated.

Voltage - Controlled Current Source :



This source makes a current equal to $3v_1$ amps, where v_1 is the voltage indicated.