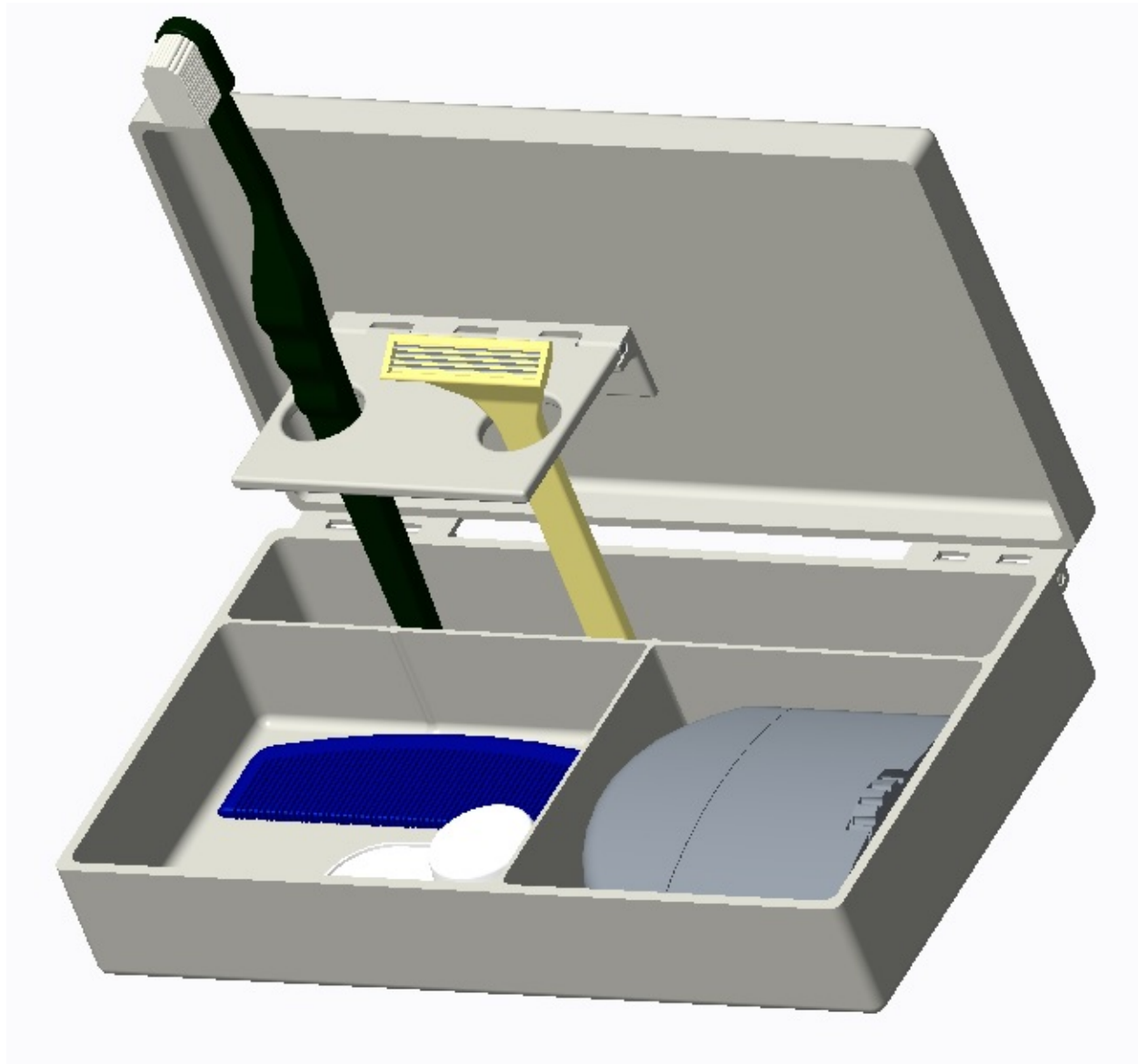


**Travel Case 5000**

**User Manual**



## Table of Contents

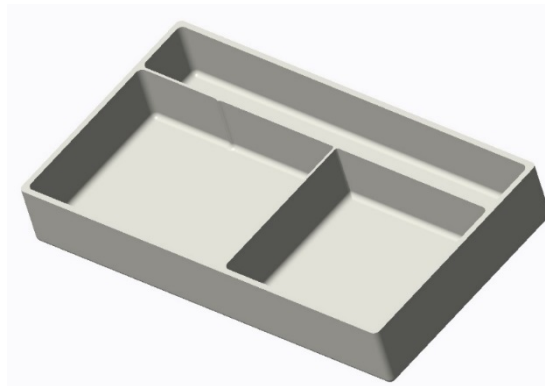
Parts List .....	2
Assembly Instructions .....	5
Operation Instructions .....	7
Warranty .....	7
Customer Service and Contact Information .....	7

## **Parts List**

This Product is assembled using three parts; The Base, The Lid and The Hinges.

If any replacement parts are needed please contact us or order them from our website at <http://webpages.uncc.edu/rboatwr3/websitehome.html>

### **Part #1 the Base**

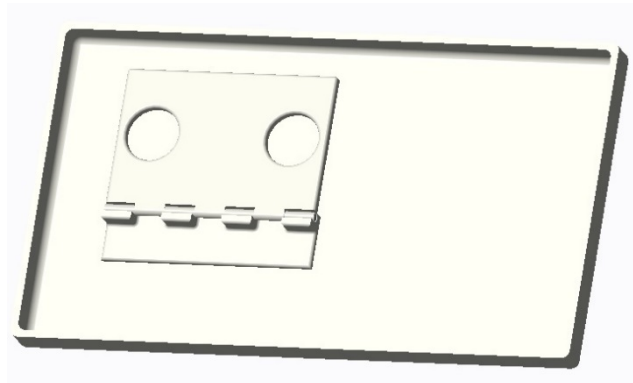


*Figure 1: the Base*

“The Base” is the main component of the Travel Case 5000. “The Base” contains compartments for the storage and containment of your toiletry items.

Part Number #2122235

### **Part #2 the Lid:**

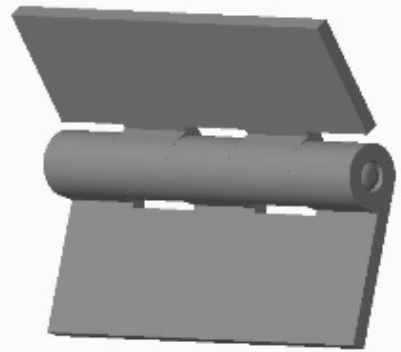


*Figure 2: the Lid*

The Lid of the Travel Case 5000 is design to seal and protect your toiletry items during transportation and storage. One key feature of the lid is a foldable toothbrush and razor stand. The foldable stand is designed to keep your toothbrush and razor in an upright position for drying after use.

Part Number #2212525

**Part #3 the Hinges**



*Figure 3: the Hinges*

The Hinges of the Travel Case 5000 are durable and reliable and are attached using high quality adhesive.

Part Number #1245856

## **Assembly Instructions**

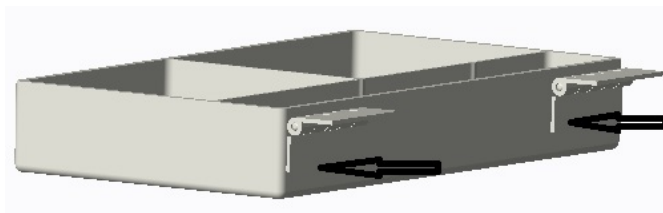
The Travel Case 5000 will be shipped to you fully assembled. Our travel case design is made to have replacement parts so if something breaks you can get the replacement part for cheaper than buying a whole new travel case. The instructions listed below inform you how to change out the replacement parts, and how to assemble your Travel Case 5000 if assembly is required. If any of the parts listed above are missing for your Travel Case 5000 please contact our customer service provider at 1-800-travel.

For customer convince, each order of either the base or lid comes with an extra set of hinges for assembly.

If assembly is required, please follow these simple steps.

Attaching the Hinges to the Base:

1. Clean the surfaces where the hinges will attach to the Base to insure proper adhesion.
2. Remove the film covering the adhesive on the hinge to expose it.
3. Attach the hinge using the guided lines on the base as shown in Figure 4.

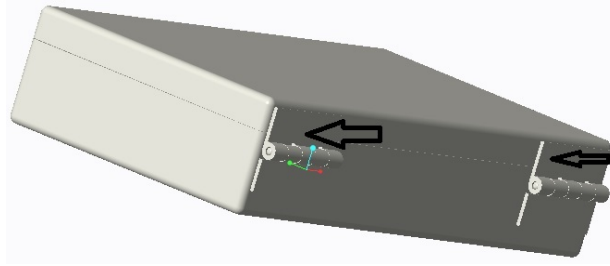


*Figure 4: Base-Hinges Subassembly*

4. Repeat steps 1 through 3 for and opposing hinge.

Attaching the Lid to the Hinges:

5. Clean the surfaces where the hinge attaches on the lid.
6. Remove the film covering the adhesive on the opposite side of the hinge to expose it.
7. Attach the free portion of the hinge using the guidelines on the lid as shown in Figure 5.



*Figure 5: Completed Assembly*

8. Repeat steps 5 through 7 for the opposing hinge.

**Operation Instructions:**

This product is designed to make use of your bathroom essentials while away from your residency. The travel case saves space when you arrive to your destination, and is very small so it will not take up space in your bag or wherever you are transporting it. The instructions for use are very simple, you just open the case and place your desired items in their compartment and head out for your trip! Once you arrive at your destination, the rack will pop up and you place either a razor or toothbrush in the rack to save space while on your trip.

**Maintenance:**

To ensure proper sanitation and cleanliness, the *Travel Case 5000* must be cleaned at least once every two trips. It is recommended to be cleaned every trip. The recommended method of cleaning the case is to use warm water and soap. Do not over extend the top of the case when opening the case to clean it. If cleaned properly the travel case should last for many trips to come.

**Warranty:**

The *Travel Case 5000* is one of the most durable cases ever built. The Travel Case 5000 is made out of a high quality Polycarbonate to seal and protect the surface from moisture and wear and tear. If somehow, someway, the travel case breaks within 30 days, we will send you a new one free of charge. If there is a manufacturing defect in your case, send it in and we will evaluate the defect. If there is a defect then we will send a brand new case with no defects for free.

**Customer Service and Contact Information:**

If you have any questions about the *Travel Case 5000*, call us at 1-800-travel or visit us at <http://webpages.uncc.edu/rboatwr3/websitehome.html>.

Other sources for contact are listed below:

<u>Name</u>	<u>E-Mail</u>
Richard Boatwright (Lead Software Design Engineer)	<a href="mailto:rboatwr3@uncc.edu">rboatwr3@uncc.edu</a>
Austin Matthews (Lead Technical Design Engineer)	<a href="mailto:amatth38@uncc.edu">amatth38@uncc.edu</a>
Omer Muchahit (Lead Communication and Manufacturing Engineer)	<a href="mailto:omucahit@uncc.edu">omucahit@uncc.edu</a>
Shane Whicker (Lead Quality and Processing Engineer)	<a href="mailto:swhicke1@uncc.edu">swhicke1@uncc.edu</a>

